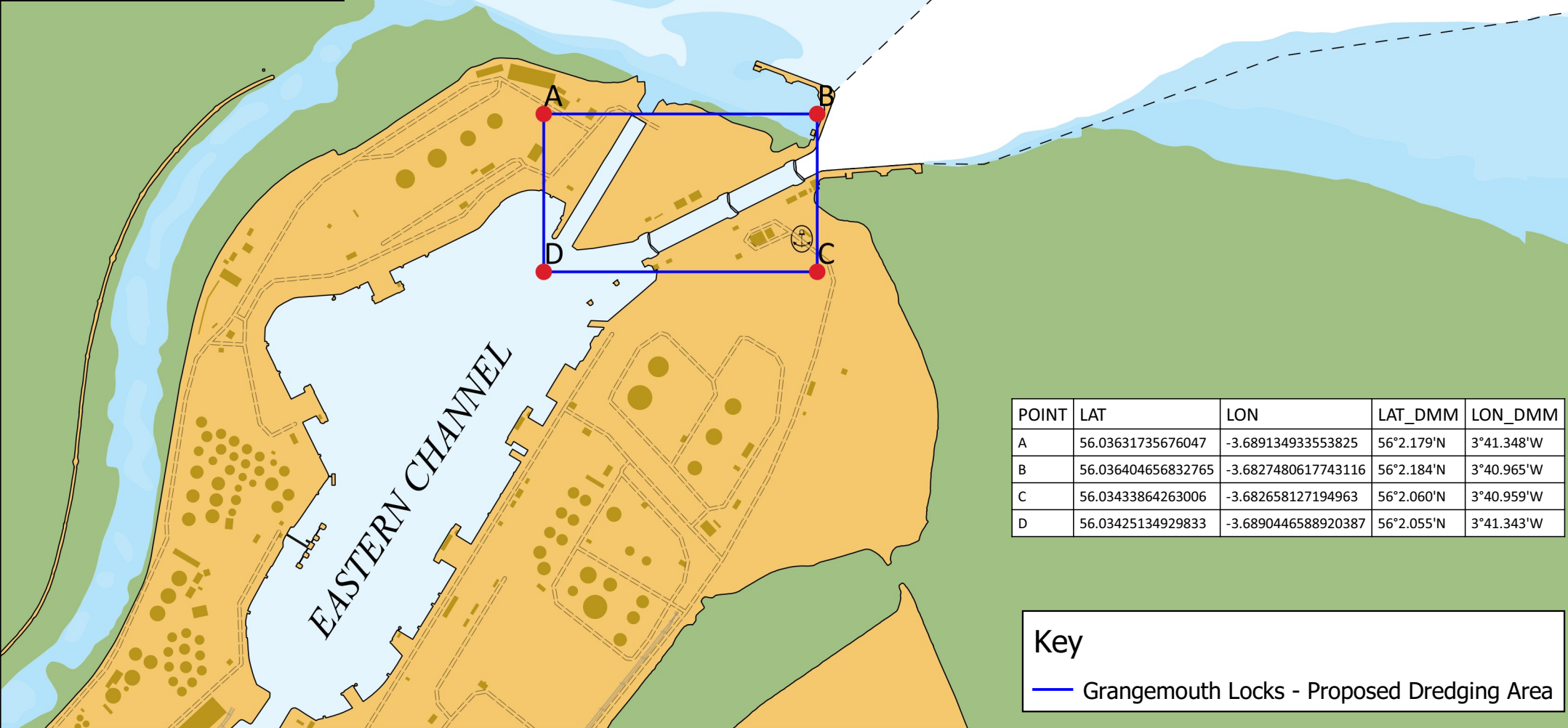


**Proposed Grangemouth Locks and LPG
Berth Dredging Area
22-06-2020**



POINT	LAT	LON	LAT_DMM	LON_DMM
A	56.03631735676047	-3.689134933553825	56°2.179'N	3°41.348'W
B	56.036404656832765	-3.6827480617743116	56°2.184'N	3°40.965'W
C	56.03433864263006	-3.682658127194963	56°2.060'N	3°40.959'W
D	56.03425134929833	-3.6890446588920387	56°2.055'N	3°41.343'W

Key

— Grangemouth Locks - Proposed Dredging Area